

NOTATIONS: 1/ Subject to <i>Parks and Public Land Legislation Amendment (Central West and Other Matters) Act 2025</i> . 2/ This plan should be read in conjunction with <i>Wombat-Lerderderg National Park</i> N.P. 125D and N.P. 125E. 3/ Crown land delineated and coloured blue to become Government Road. 4/ Land delineated and coloured brown ceases to be Reserved Forest and becomes Government Road. 5/ Land delineated and coloured orange ceases to be Road and becomes Reserved Forest. 6/ Land delineated and coloured green ceases to be Reserved Forest and becomes part of <i>Wombat-Lerderderg National Park</i> . 7/ Land delineated and coloured yellow ceases to be Road and becomes part of <i>Wombat-Lerderderg National Park</i> . 8/ Land delineated and coloured purple ceases to be Road. 9/ Dimensions shown thus: (20.12) define the total width of the road alignment that is the result of this plan 10/ New road boundaries have not been marked on the ground.	
PREPARED FROM: VDP, B404(2), B405(6), B405(9), B405(11), B405(12), T171(4), T171B, T171S(1), NR599A, OP30312, OP58170, OP58293, OP72455, OP73888, OP106233, OP120352, AP125182, AP140096Y, PS621959N, YEARLY FIELDNOTES Yr.1894 No.89, FS328, FS329, FS670, FS673 AND SURVEY REPORT CWI 24-304\SR BY SIMON MASON LS.	
DRAWN: JL 11/11/2024 CAD FILE: LEGL 24-304.DWG	EXAMINED: SM 06/03/2025
SURVEYOR-GENERAL VICTORIA DEPARTMENT OF TRANSPORT AND PLANNING	

WOMBAT-LERDERDERG NATIONAL PARK CREATION OF GOVERNMENT ROAD	
COUNTY : BOURKE PARISH : BLACKWOOD (2160) CROWN ALLOTMENT : 2063 (ROAD), 2064 (ROAD), 2068, 2080 (ROAD), 2179, 2180, 2182, 2185 (ROAD), 2186 (ROAD), 2187 (ROAD), 2188 (ROAD), 2189 (ROAD), 2190 (ROAD), 2191 (ROAD), 2192 (ROAD), 2193 (ROAD), 2194 (ROAD), 2195, 2197 (ROAD), 2198, 2199, 2202, 2203, 2204, 2206, 2207 (ROAD), 2213, 2214, 2215, 2216, 2217, 2218, 2219, 2220, 2221, 2222, 2223, 2224, 2225, 2226 AND 2227. TOWNSHIP: BLACKWOOD (5087) CROWN ALLOTMENT : 2021 (ROAD), 2022 (ROAD), 2023, 2024, 2027, 2028, 2029 AND 2030.	
100 0 100 200 300 400 LENGTHS ARE IN METRES	SCALE 1:10000
ORIGINAL SHEET SIZE: A3	
File Ref. SS-002157 (SGV-005973)	SHEET 1 OF 12
LEGL./24-304	

MGA2020

SEE SHEET 3
FOR CONTINUATION

2188
ROAD)

2217

2218

SEE SHEET 10
FOR DETAILS

{2189
ROAD

2220

ROAD

2177

2180

SEE SHEET 9
FOR DETAILS

2235

PARISH

OF

BLACKWOOD

BLACKWOOD

2221

NORTH

SEE SHEET 7
FOR DETAILS

SEE SHEET 8
FOR DETAILS

2182

2236

SEE SHEET 1
FOR CONTINUATION

SCALE
1:8000

80 0 80 160 240 320

LENGTHS ARE IN METRES

ORIGINAL SHEET
SIZE: A3

SHEET 2

SURVEYOR-GENERAL VICTORIA
DEPARTMENT OF
TRANSPORT AND PLANNING

LEGL./24-304

MGA2020
ZONE 55

19 of 12

PARISH OF TRENTHAM

103^D

LOT 1
PS621959

LOT 2
PS621959

LOT 1
TP756903

103^{K1}

ALBERT

DUNN

TRACK

SEE SHEET 12
FOR DETAILS

2179

2216

PARISH

OF

BLACKWOOD

2235

2187
ROAD

SEE SHEET 11
FOR DETAILS

2188
ROAD

2217

2218

NORTH

2180

SEE SHEET 9
FOR DETAILS

SEE SHEET 10
FOR DETAILS

SEE SHEET 2
FOR CONTINUATION

SURVEYOR-GENERAL VICTORIA
DEPARTMENT OF
TRANSPORT AND PLANNING

SCALE
1:10000

100 0 100 200 300 400
LENGTHS ARE IN METRES

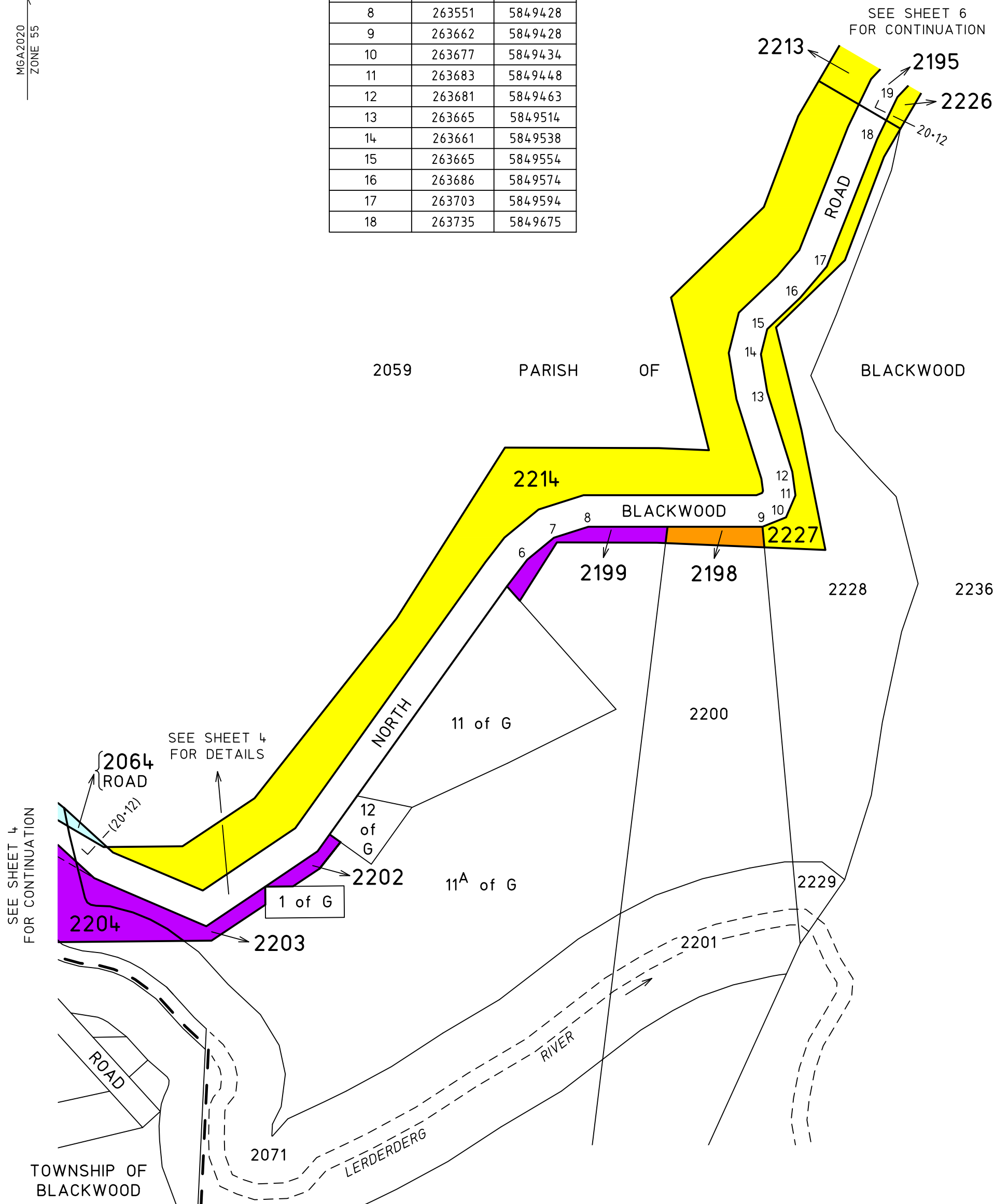
ORIGINAL SHEET
SIZE: A3

SHEET 3

LEGL./24-304

MGA2020
ZONE 55

TABLE OF CO-ORDINATES MGA2020 ZONE 55		
POINT No.	EASTING	NORTHING
6	263512	5849407
7	263529	5849421
8	263551	5849428
9	263662	5849428
10	263677	5849434
11	263683	5849448
12	263681	5849463
13	263665	5849514
14	263661	5849538
15	263665	5849554
16	263686	5849574
17	263703	5849594
18	263735	5849675



SURVEYOR-GENERAL VICTORIA
DEPARTMENT OF
TRANSPORT AND PLANNING

SCALE
1:2500

25 0 25 50 75 100
LENGTHS ARE IN METRES

ORIGINAL SHEET
SIZE: A3

SHEET 5

LEGL./24-304

MGA2020
ZONE 55

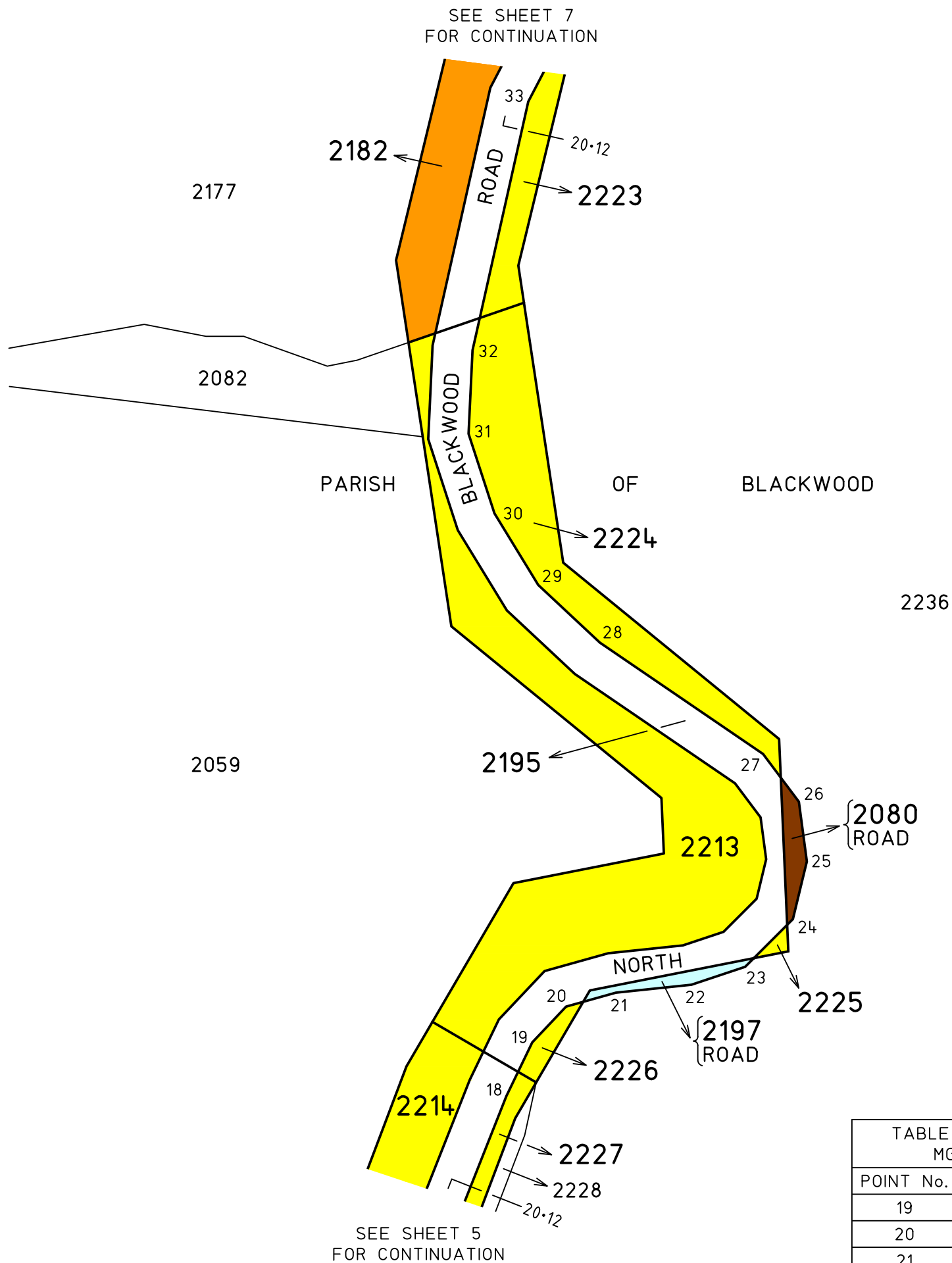


TABLE OF CO-ORDINATES MGA2020 ZONE 55		
POINT No.	EASTING	NORTHING
19	263748	5849702
20	263765	5849720
21	263790	5849727
22	263828	5849731
23	263855	5849740
24	263879	5849764
25	263886	5849793
26	263882	5849823
27	263864	5849847
28	263782	5849903
29	263751	5849932
30	263729	5849968
31	263716	5850008
32	263718	5850050

SURVEYOR-GENERAL VICTORIA
DEPARTMENT OF
TRANSPORT AND PLANNING

SCALE
1:2500

25 0 25 50 75 100
LENGTHS ARE IN METRES

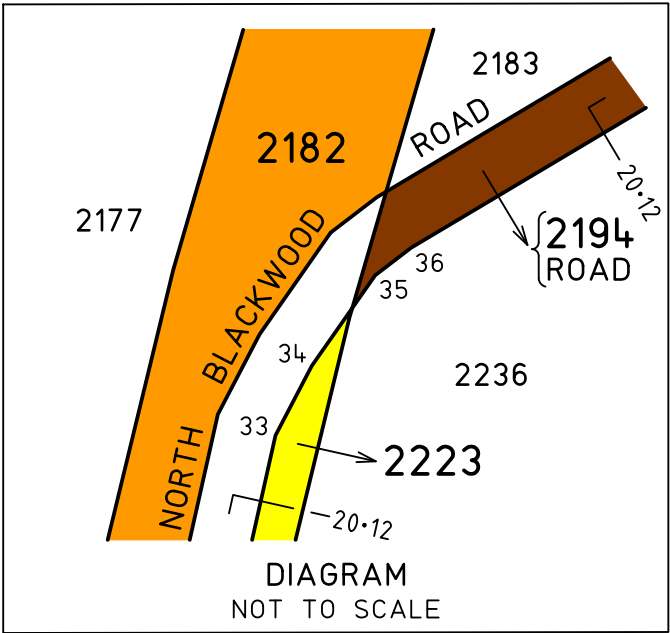
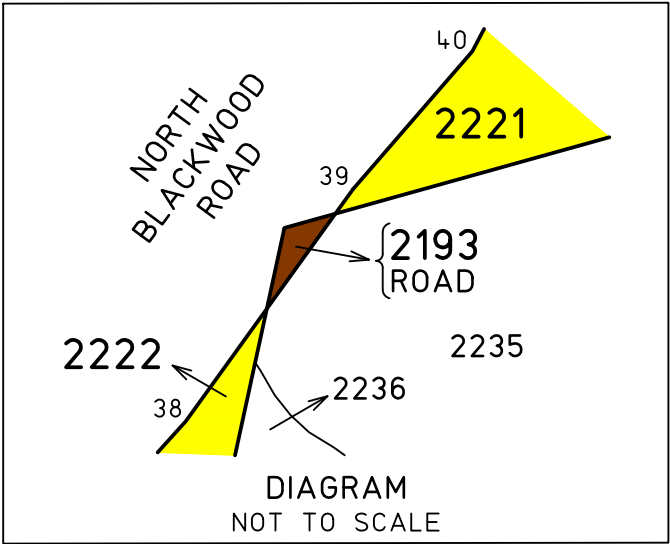
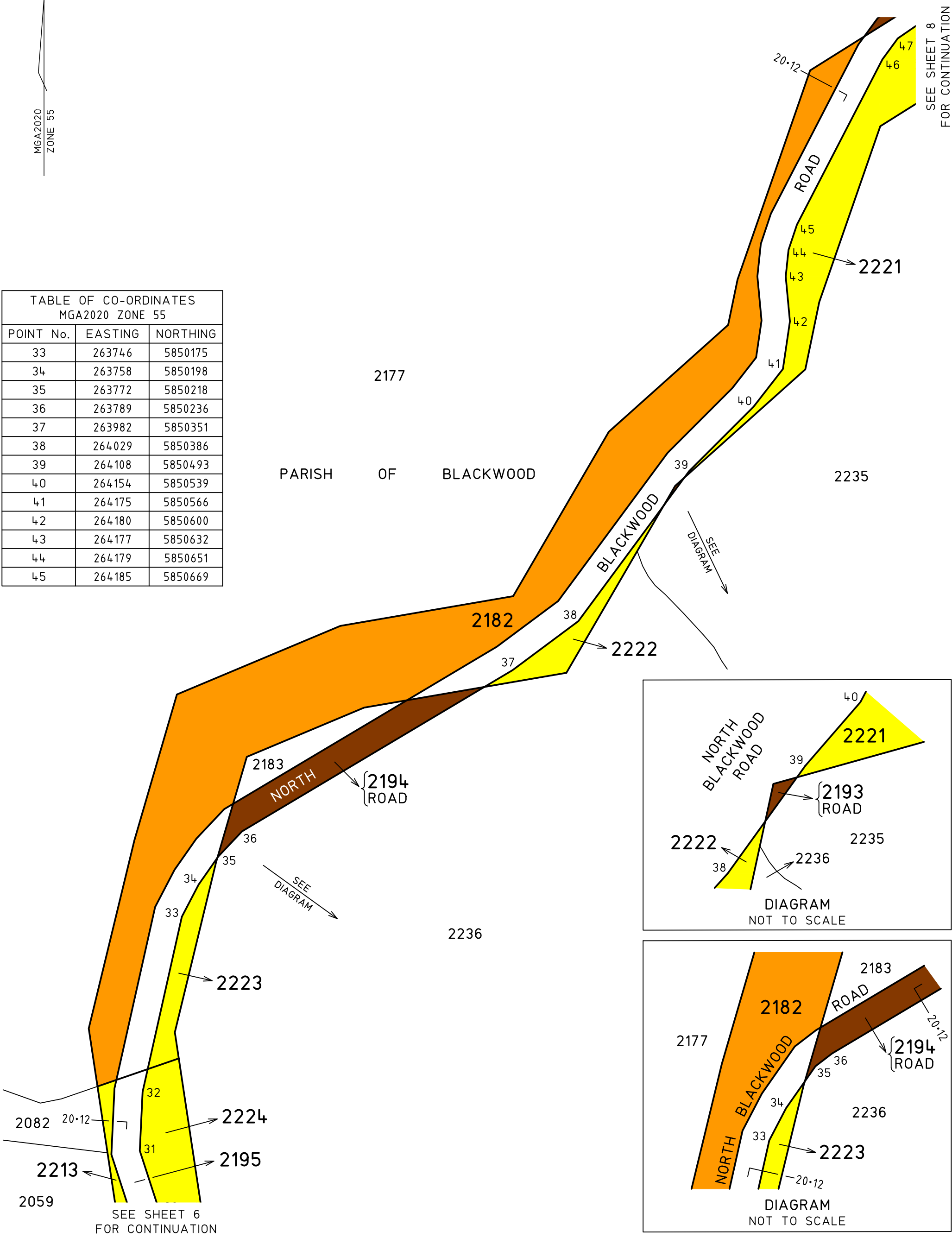
ORIGINAL SHEET
SIZE: A3

SHEET 6

LEGL./24-304

MGA2020
ZONE 55

TABLE OF CO-ORDINATES MGA2020 ZONE 55		
POINT No.	EASTING	NORTHING
33	263746	5850175
34	263758	5850198
35	263772	5850218
36	263789	5850236
37	263982	5850351
38	264029	5850386
39	264108	5850493
40	264154	5850539
41	264175	5850566
42	264180	5850600
43	264177	5850632
44	264179	5850651
45	264185	5850669



SURVEYOR-GENERAL VICTORIA
DEPARTMENT OF
TRANSPORT AND PLANNING

SCALE
1:2500

25 0 25 50 75 100
LENGTHS ARE IN METRES

ORIGINAL SHEET
SIZE: A3

SHEET 7

LEGL./24-304

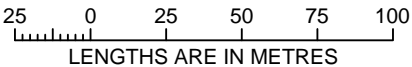
MGA2020
ZONE 55



TABLE OF CO-ORDINATES MGA2020 ZONE 55		
POINT No.	EASTING	NORTHING
46	264246	5850787
47	264257	5850802
48	264273	5850813
49	264336	5850849
50	264373	5850880
51	264404	5850917
52	264428	5850960
53	264459	5851070
54	264481	5851236
55	264507	5851526

SURVEYOR-GENERAL VICTORIA
DEPARTMENT OF
TRANSPORT AND PLANNING

SCALE
1:2500



ORIGINAL SHEET
SIZE: A3

SHEET 8

LEGL./24-304

MGA2020
 ZONE 55

SEE SHEET 10
FOR CONTINUATION

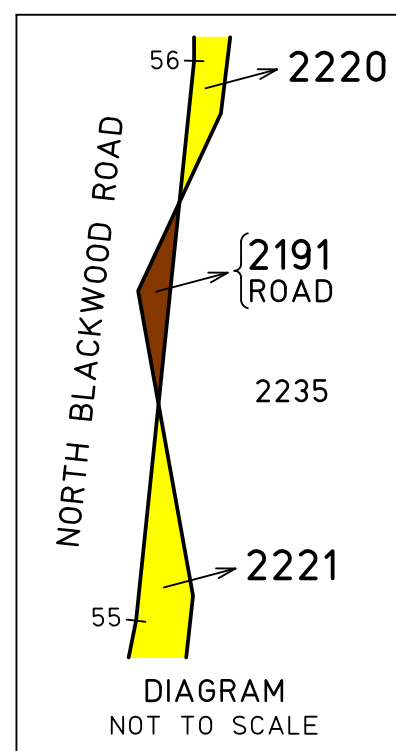
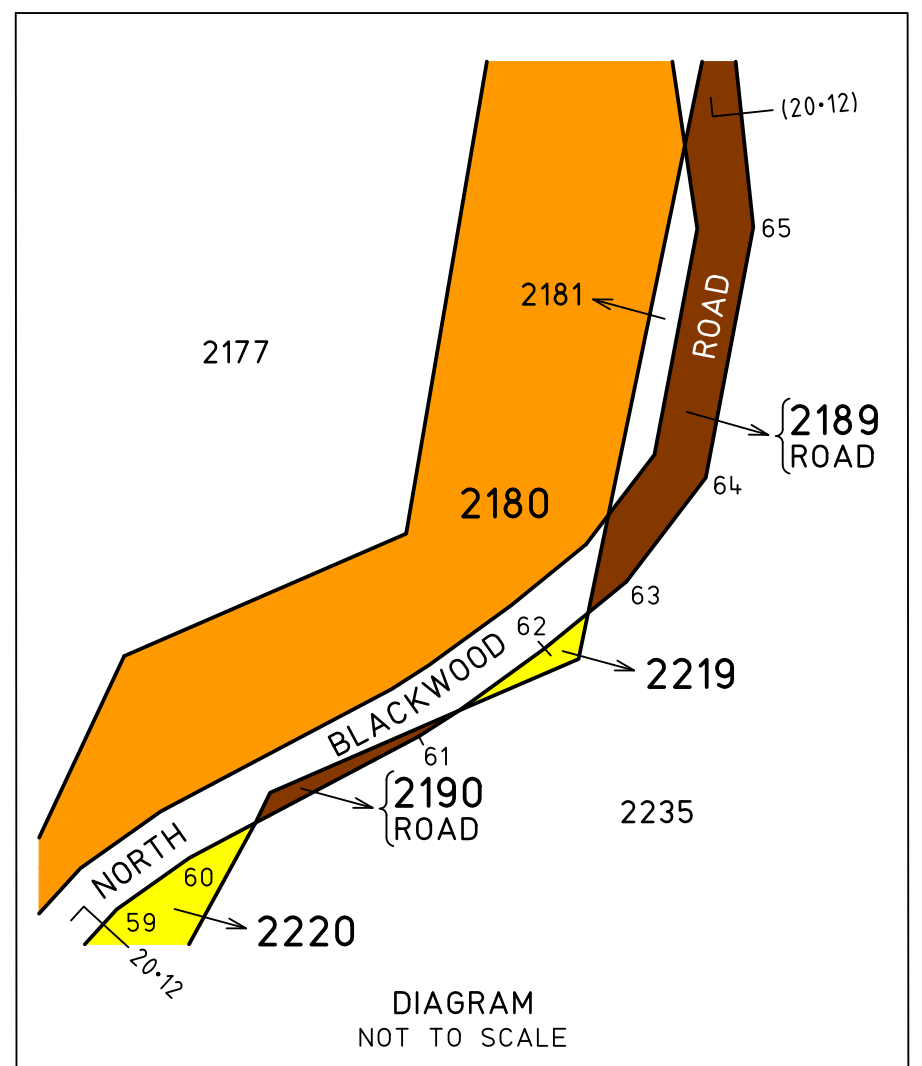
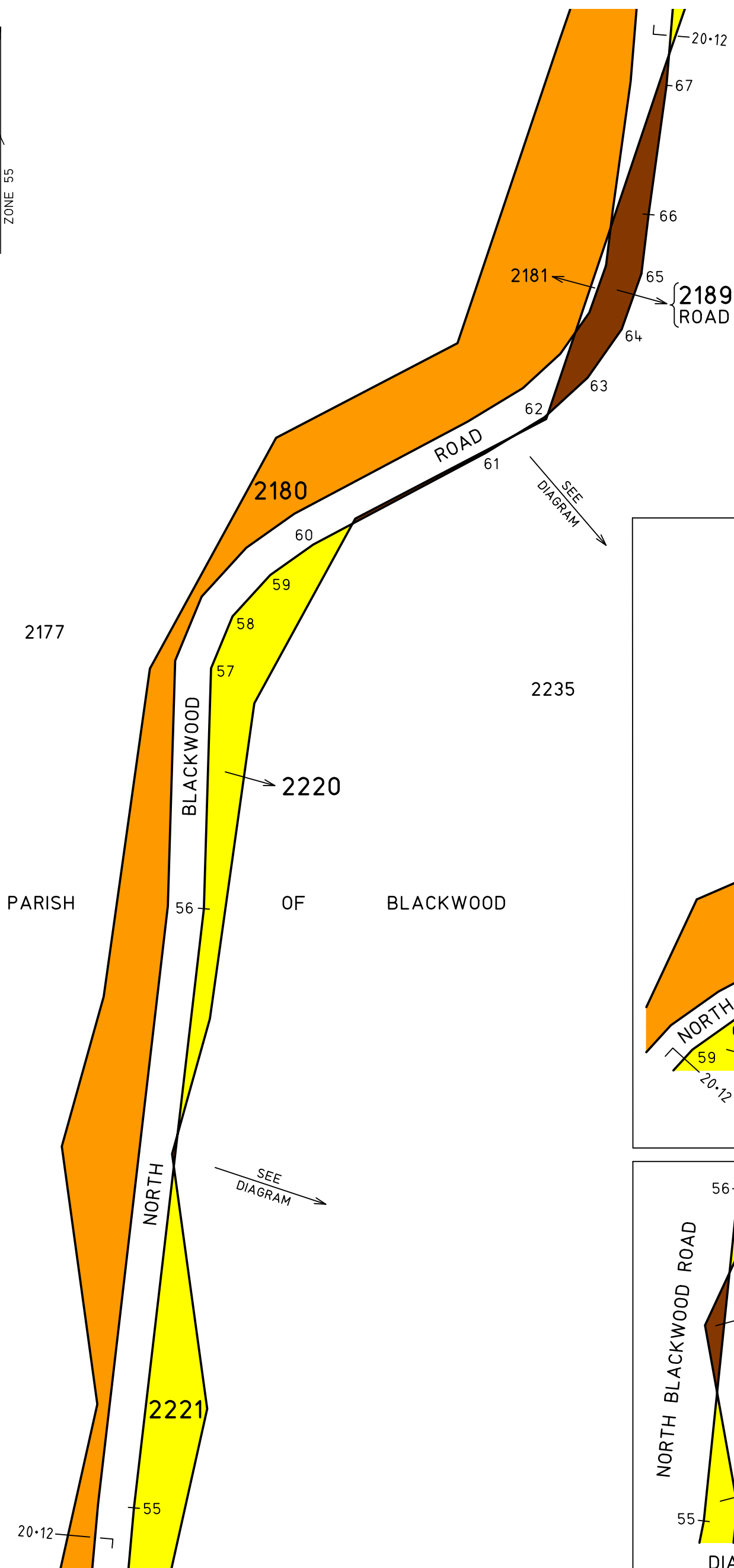
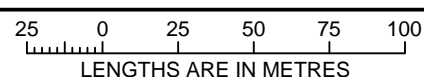


TABLE OF CO-ORDINATES MGA2020 ZONE 55		
POINT No.	EASTING	NORTHING
56	264546	5851860
57	264550	5851994
58	264562	5852023
59	264583	5852046
60	264607	5852063
61	264703	5852114
62	264736	5852134
63	264760	5852156
64	264779	5852183
65	264790	5852214
66	264794	5852247

SURVEYOR-GENERAL VICTORIA
DEPARTMENT OF
TRANSPORT AND PLANNING

SCALE
1:2500



ORIGINAL SHEET
SIZE: A3

SHEET 9

LEGL./24-304

MGA2020
ZONE 55

SEE SHEET 11
FOR CONTINUATION

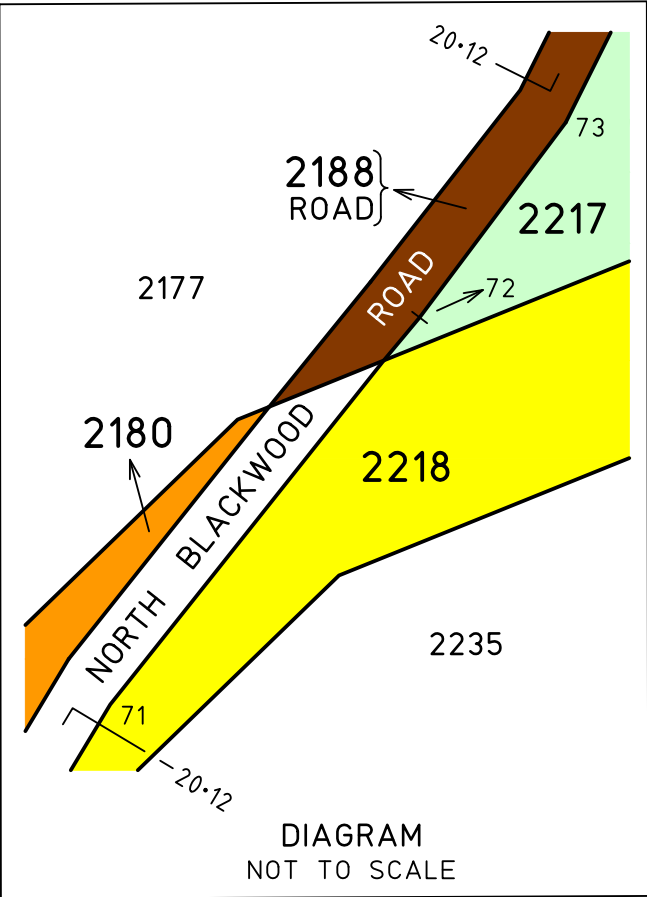
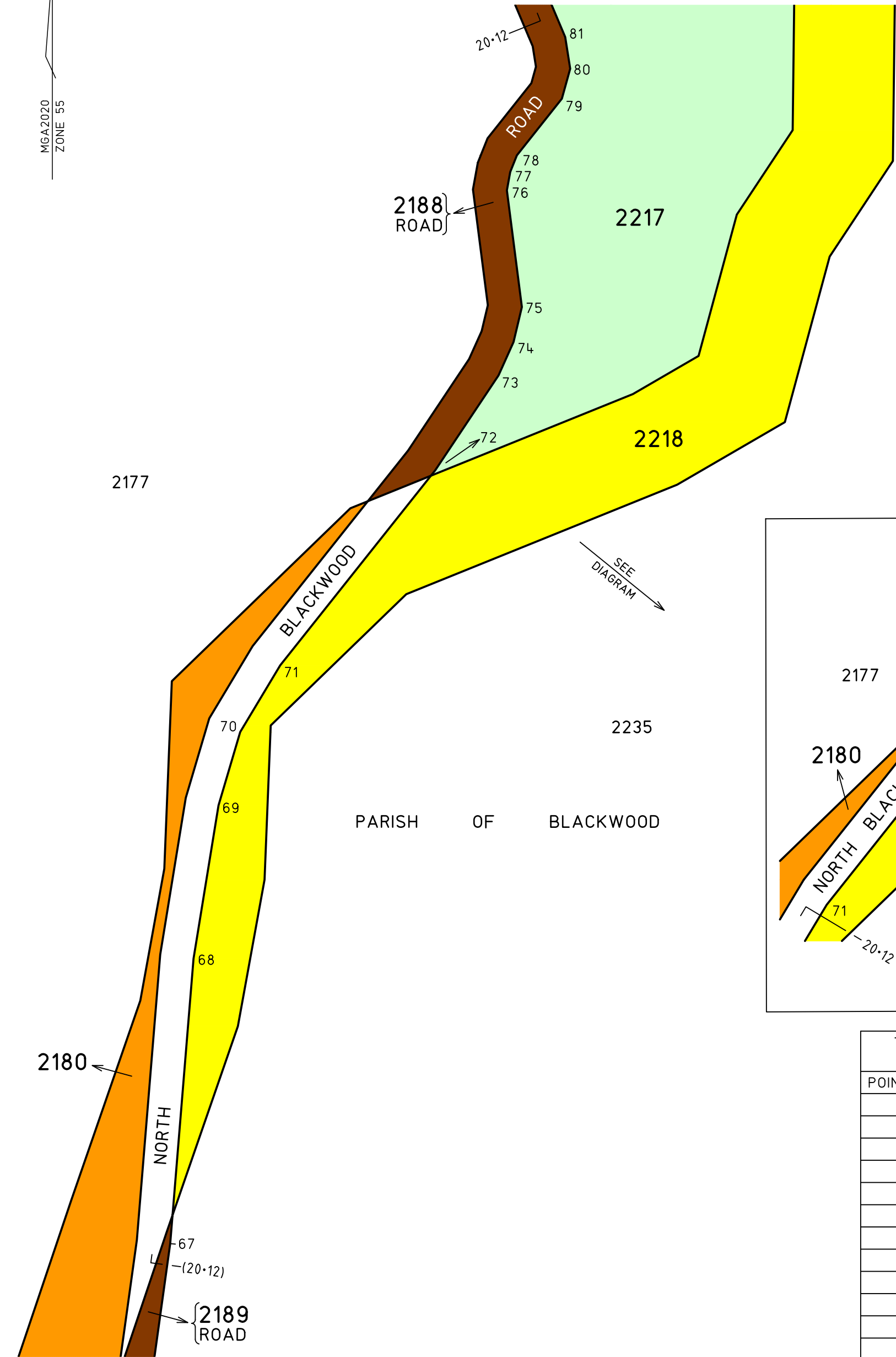


TABLE OF CO-ORDINATES MGA2020 ZONE 55		
POINT No.	EASTING	NORTHING
67	264804	5852319
68	264818	5852490
69	264833	5852582
70	264846	5852626
71	264870	5852666
72	264963	5852783
73	265001	5852840
74	265010	5852860
75	265015	5852881
76	265006	5852951
77	265008	5852962
78	265012	5852972
79	265039	5853006
80	265044	5853024
81	265041	5853043

SURVEYOR-GENERAL VICTORIA
DEPARTMENT OF
TRANSPORT AND PLANNING

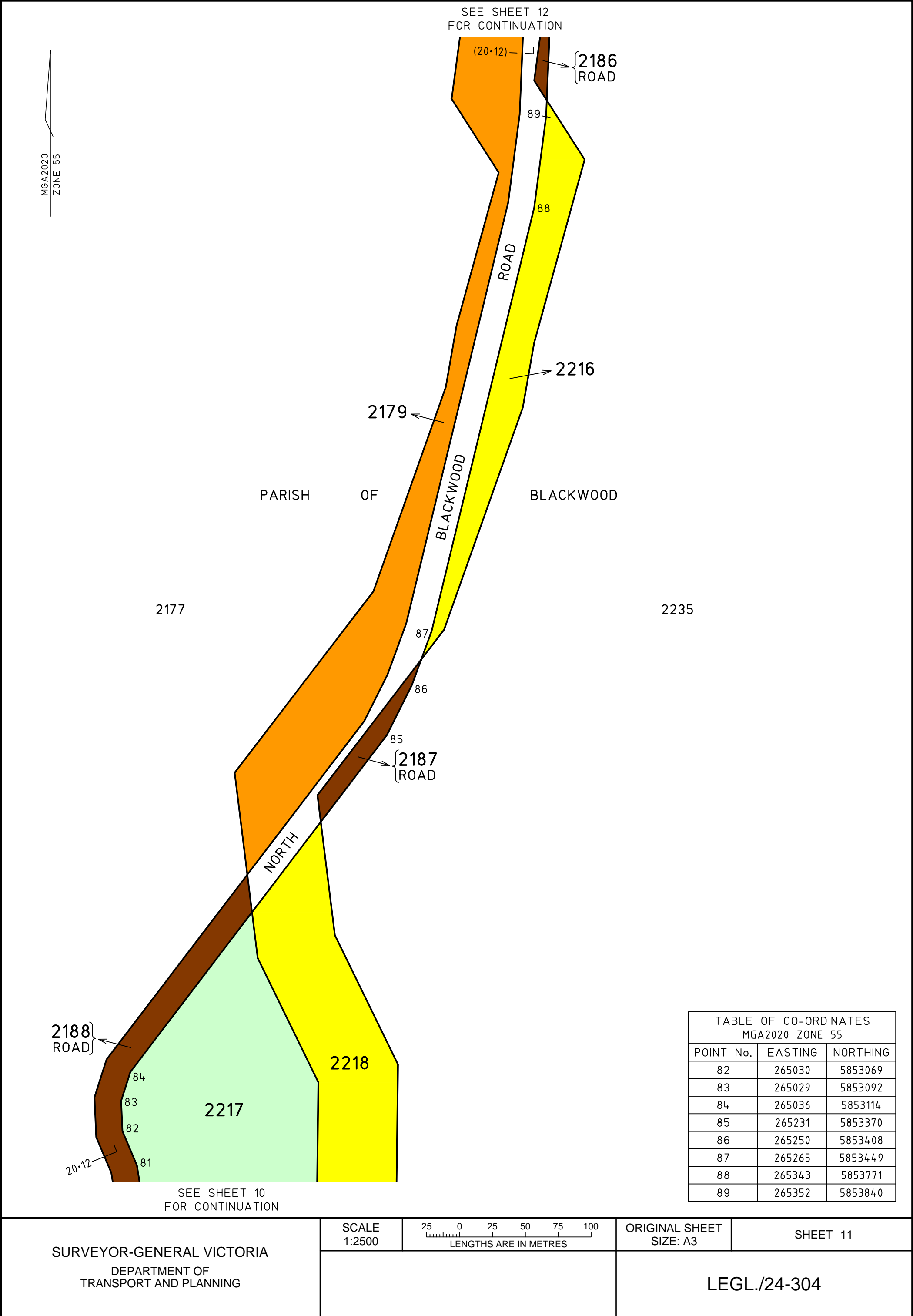
SCALE
1:2500

25 0 25 50 75 100
LENGTHS ARE IN METRES

ORIGINAL SHEET
SIZE: A3

SHEET 10

LEGL./24-304



SEE SHEET 12
FOR CONTINUATION

(20-12) —

{2186
ROAD

89

88

ROAD

2216

2179

PARISH

OF

BLACKWOOD

BLACKWOOD

2177

2235

87

86

85

{2187
ROAD

NORTH

2188
ROAD

84

83

82

81

2218

2217

20-12

SEE SHEET 10
FOR CONTINUATION

TABLE OF CO-ORDINATES MGA2020 ZONE 55		
POINT No.	EASTING	NORTHING
82	265030	5853069
83	265029	5853092
84	265036	5853114
85	265231	5853370
86	265250	5853408
87	265265	5853449
88	265343	5853771
89	265352	5853840

SURVEYOR-GENERAL VICTORIA
DEPARTMENT OF
TRANSPORT AND PLANNING

SCALE
1:2500

25 0 25 50 75 100
LENGTHS ARE IN METRES

ORIGINAL SHEET
SIZE: A3

SHEET 11

LEGL./24-304

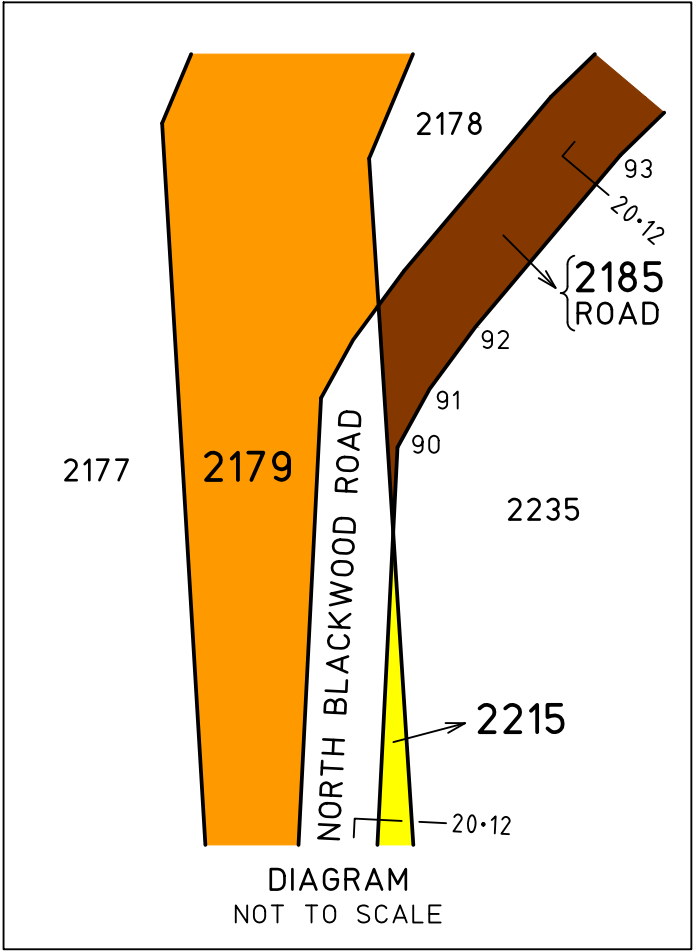
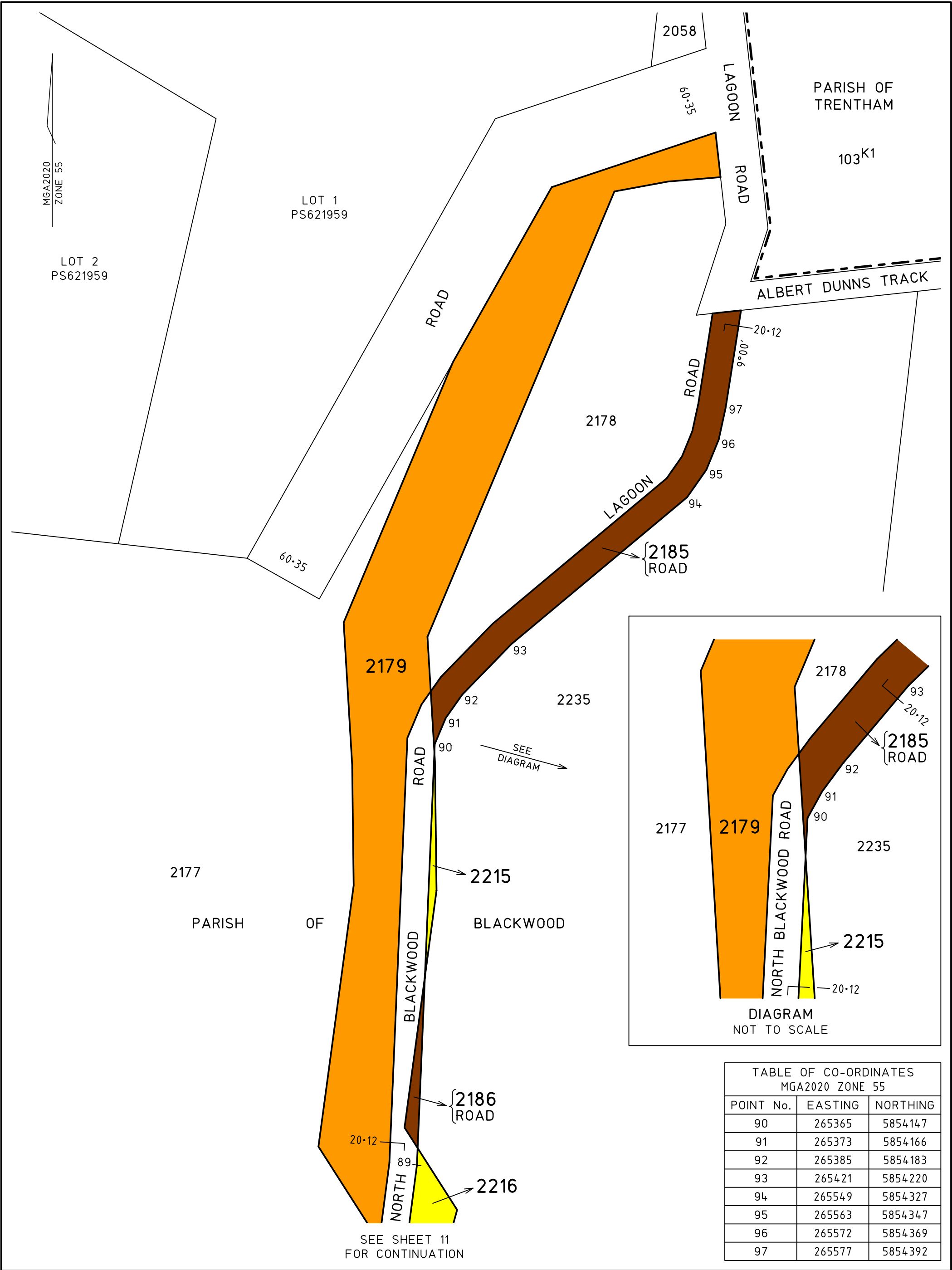


TABLE OF CO-ORDINATES MGA2020 ZONE 55		
POINT No.	EASTING	NORTHING
90	265365	5854147
91	265373	5854166
92	265385	5854183
93	265421	5854220
94	265549	5854327
95	265563	5854347
96	265572	5854369
97	265577	5854392