

TABLE 1  
TABLE OF CO-ORDINATES  
HEA2022 ZONE 55

POINT No.	EASTING	NORTHING
1	28183	5836391
2	28186	5836365
3	28198	5836352
4	28191	5836377
5	28192	5836386
6	28124	5836272
7	28124	5836258
8	28125	5836258
9	28124	5836248
10	28192	5836356
11	28131	5836258
12	28153	5836246
13	28175	5836229
14	28185	5836217
15	28187	5836192
16	28188	5836171

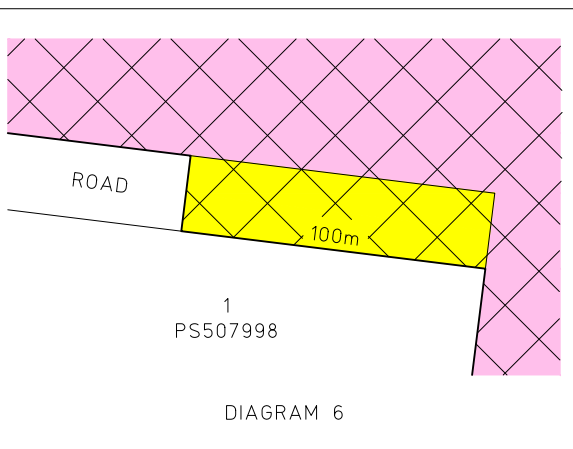
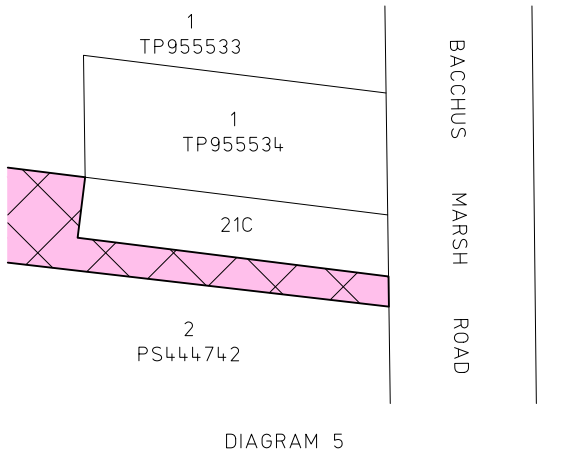
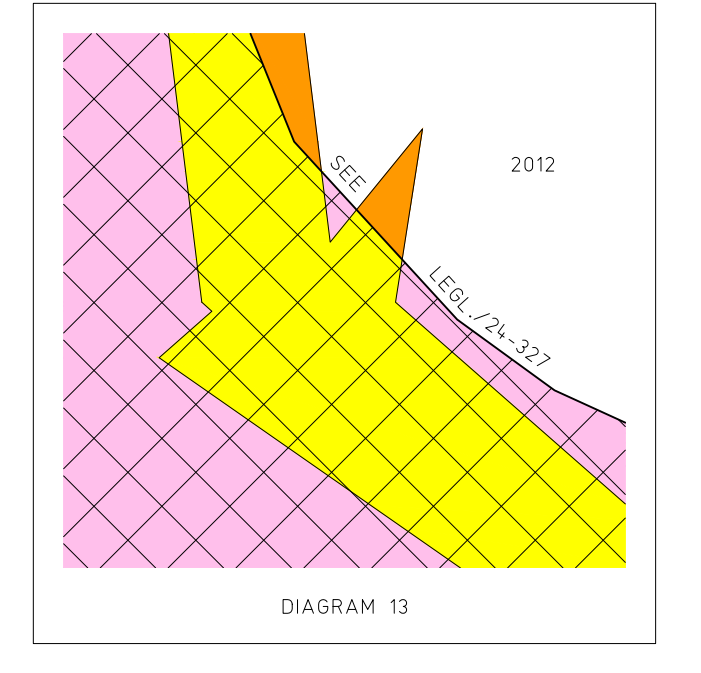
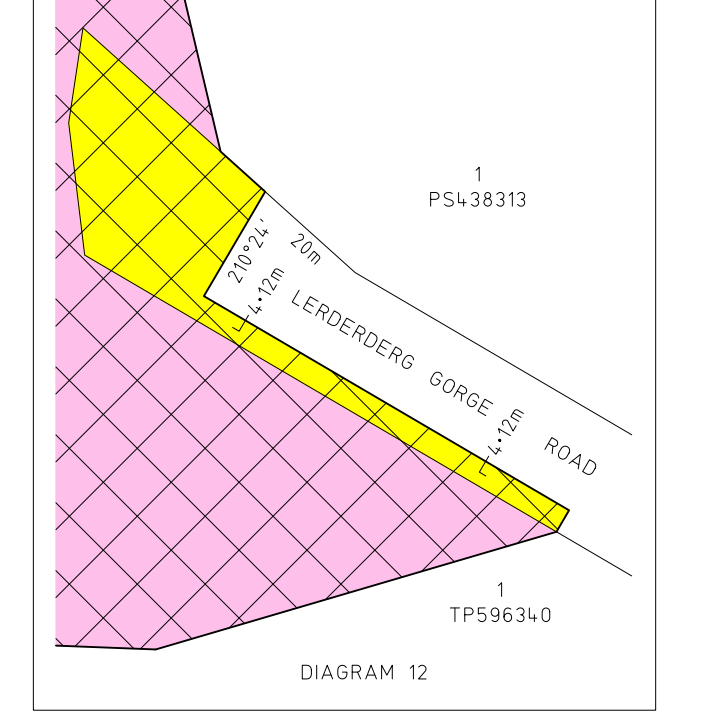
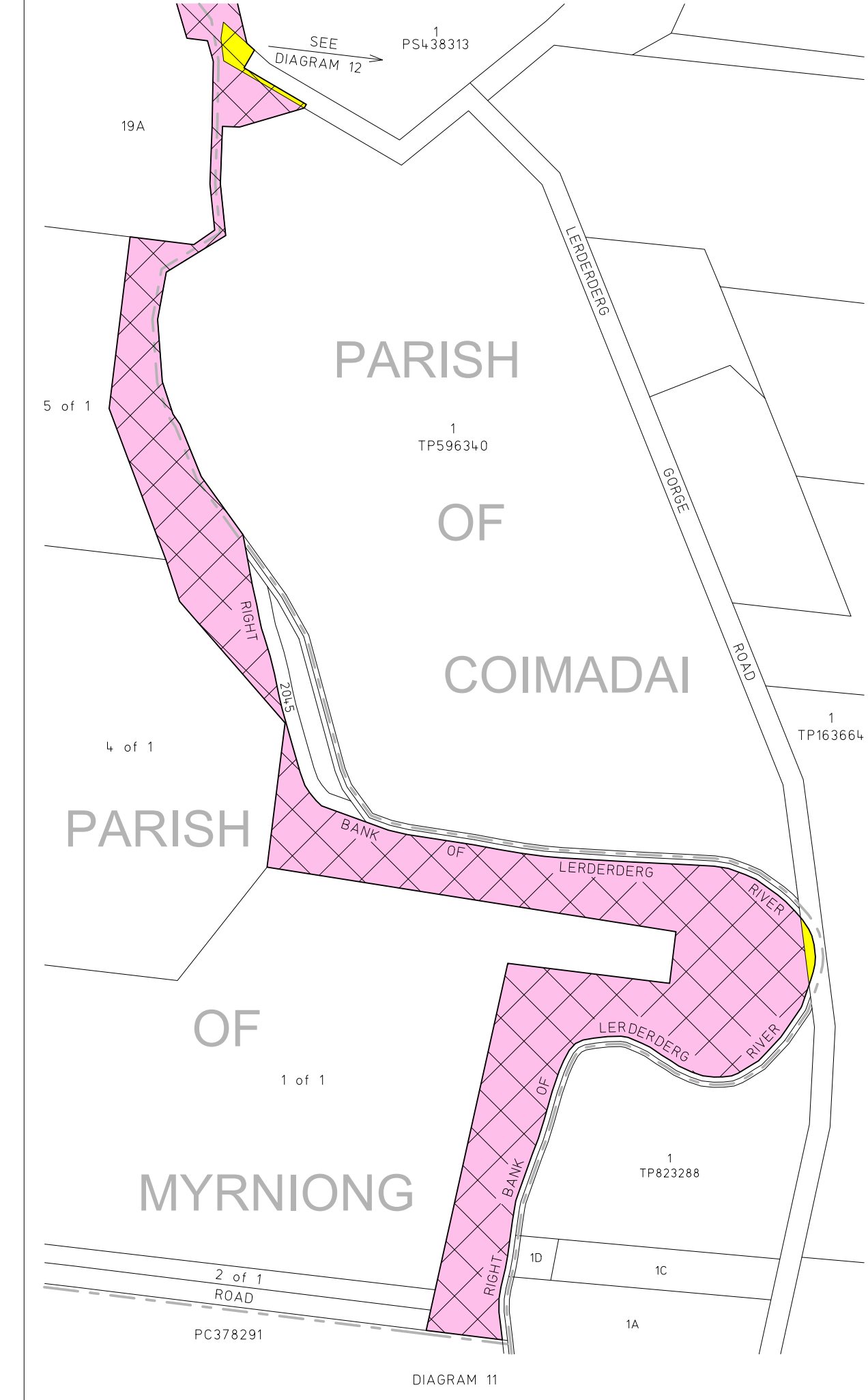
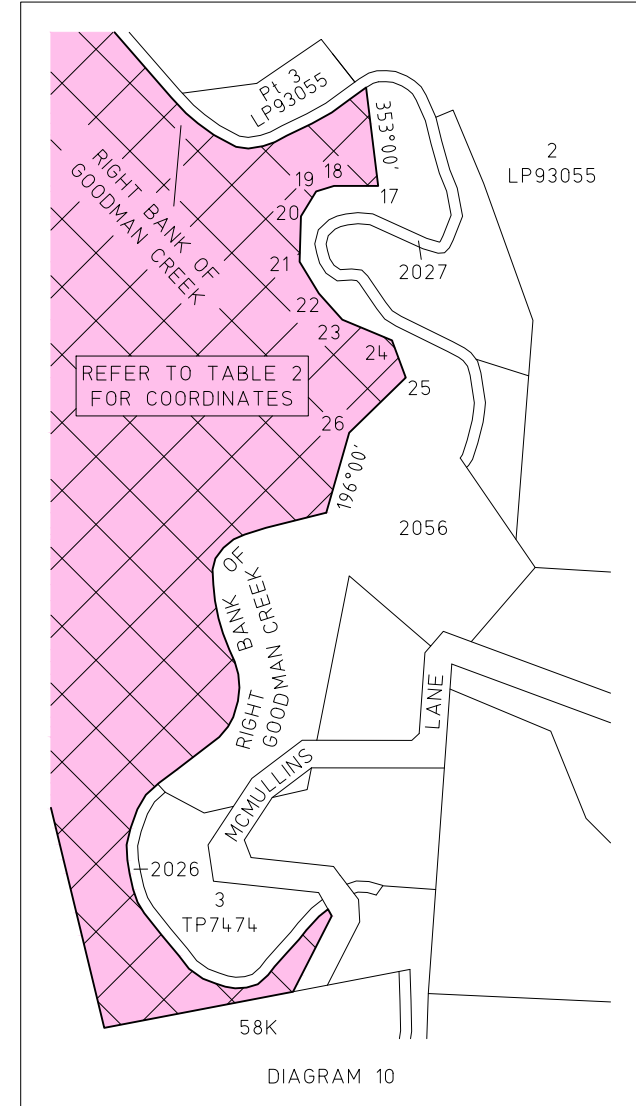
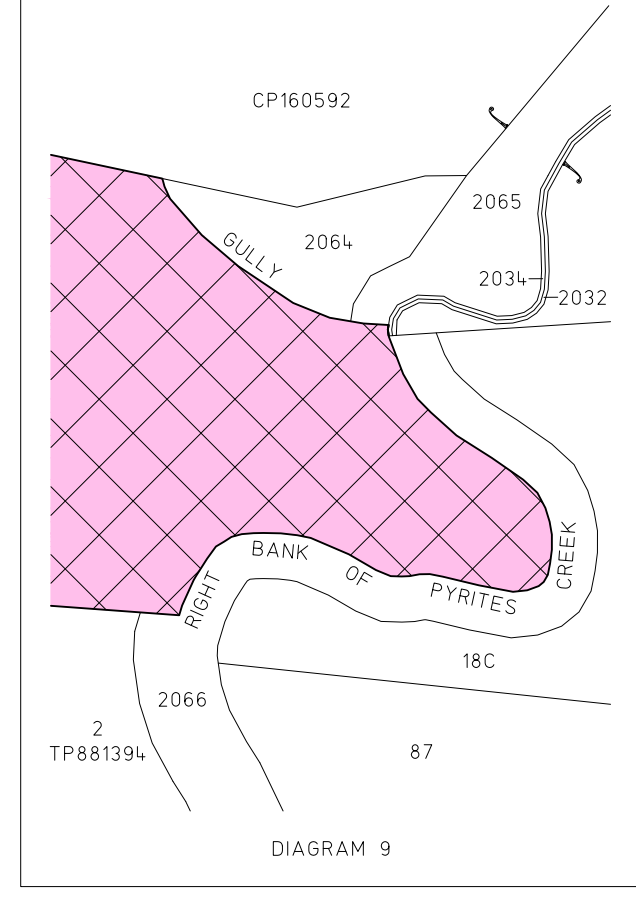
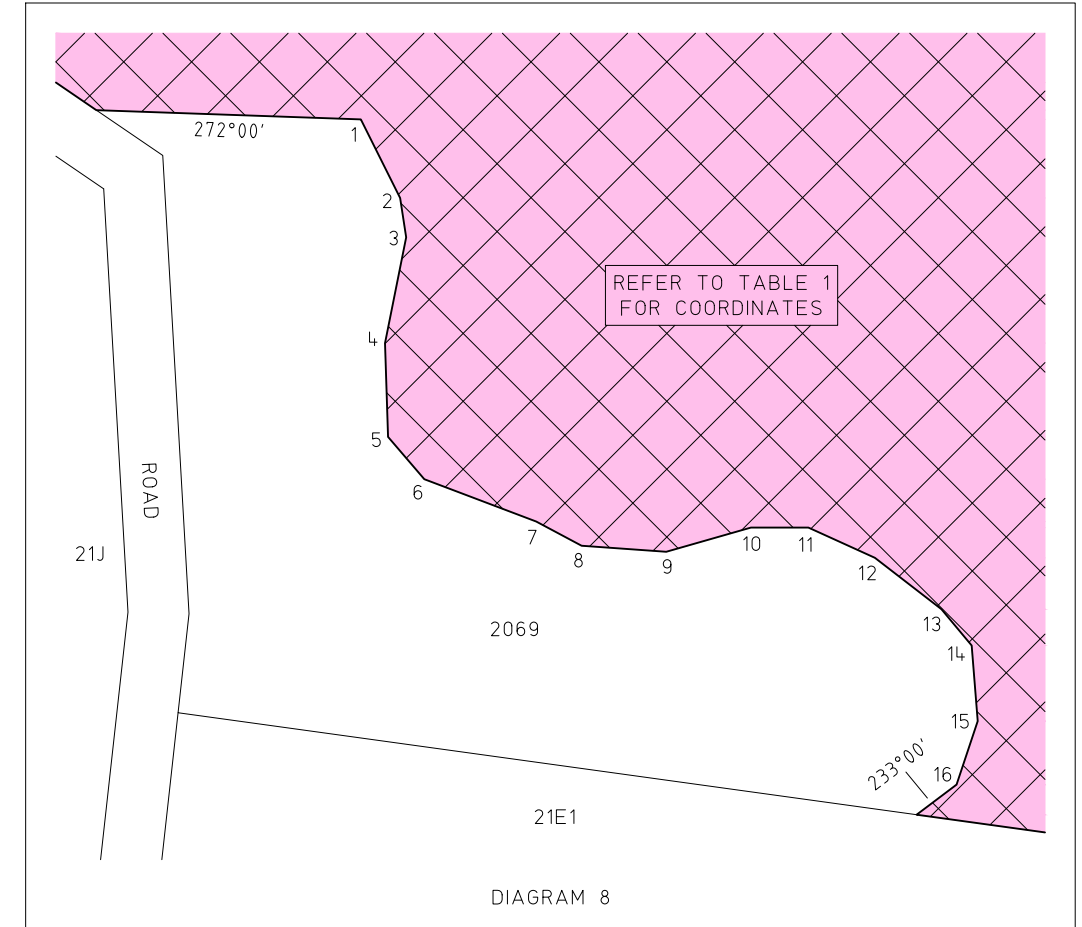


TABLE 2  
TABLE OF CO-ORDINATES  
HEA2022 ZONE 55

POINT No.	EASTING	NORTHING
17	275296	5836418
18	275264	5836418
19	275251	5836416
20	275244	5836796
21	275239	5836763
22	275259	5836768
23	275276	5836731
24	275366	5836708
25	275316	5836679
26	275275	5836639



Loaded in the Central Plan Office pursuant to Section 42  
Surveying Act 2004  
Closed this 8th day of September 2025  
*John Carmichael*  
For Craig Leslie Sandy, Surveyor-General of Victoria