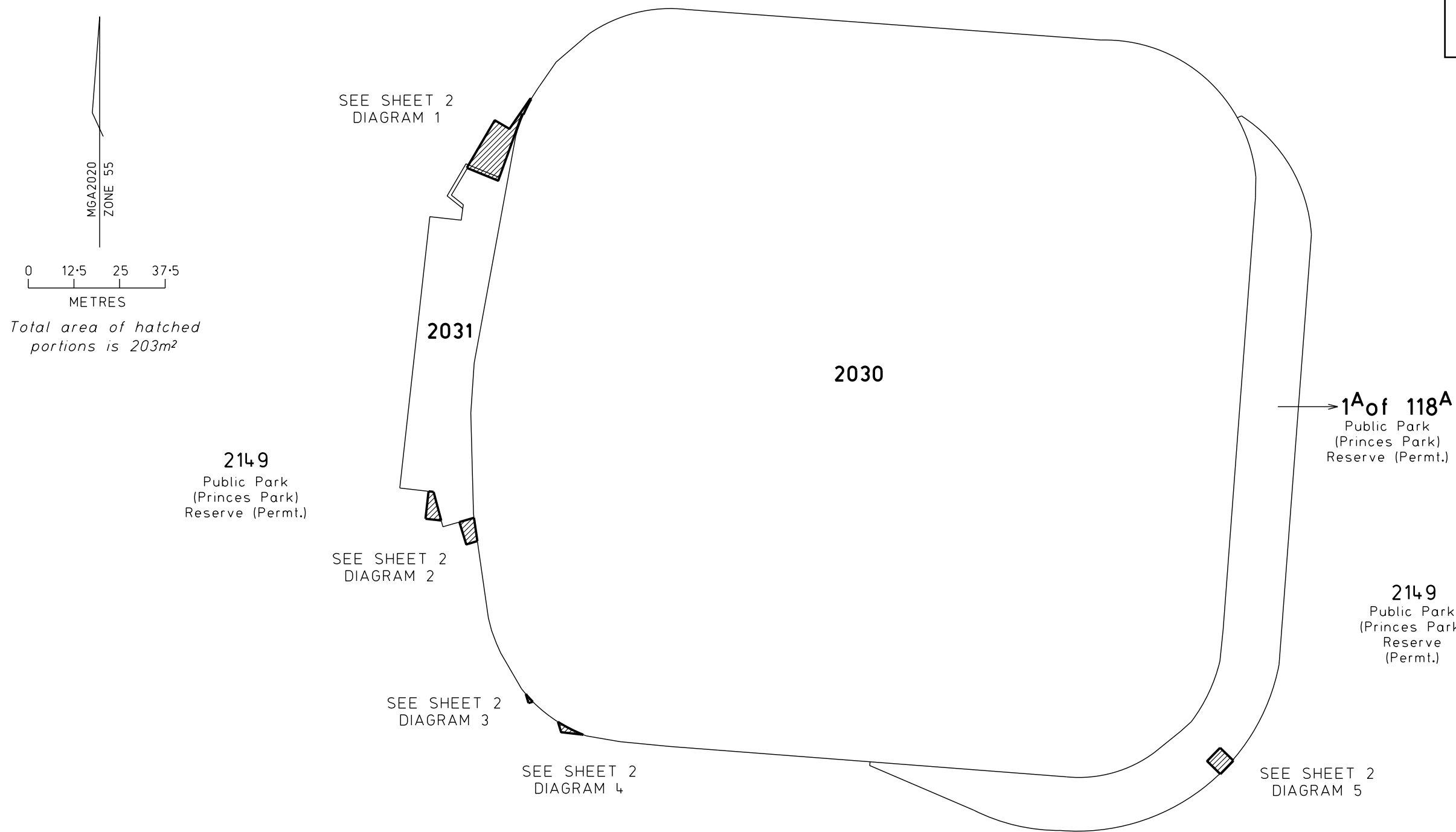


Lodged in the Central Plan Office
Dated this 15th day of December 2023

Mathew Curtis

for Craig Leslie Sandy, Surveyor-General of Victoria.



COUNTY OF BOURKE
PARISH OF JIKA JIKA AT CARLTON
CROWN ALLOTMENTS 2143, 2144, 2145, 2146, 2147 AND 2148

Notations:
CROWN ALLOTMENTS 2143 TO 2148 (INCLUSIVE) ARE PERMANENTLY RESERVED FOR PUBLIC PARK (PRINCES PARK) PURPOSES AND ARE PART OF RESTRICTIVE CROWN GRANT VOLUME 600 FOLIO 908.

<i>Prepared from:</i> VDP, M314(14), OP126524X AND LEGL./11-042		ORIGINAL		T. Hawkins - 15/12/2023	
		SCALE 1:1250	SHEET SIZE A3	for CRAIG LESLIE SANDY SURVEYOR-GENERAL VICTORIA	
<i>File Ref.</i> PO-13752	<i>Drawn:</i> MGH 4/11/2023	SHEET 1 OF 2		LEGL./23-315	

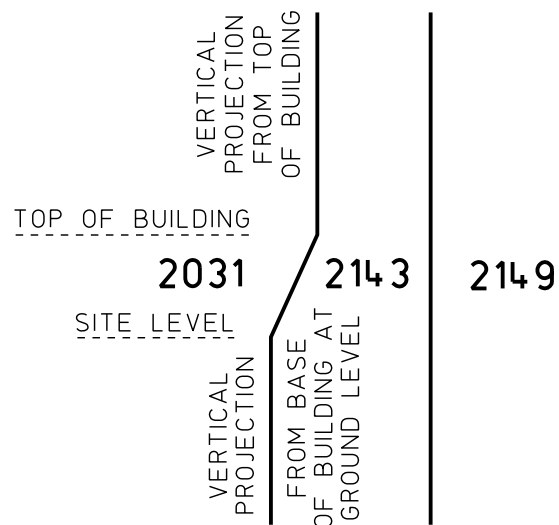


DIAGRAM 1
NOT TO SCALE

SECTION A-A'
NOT TO SCALE

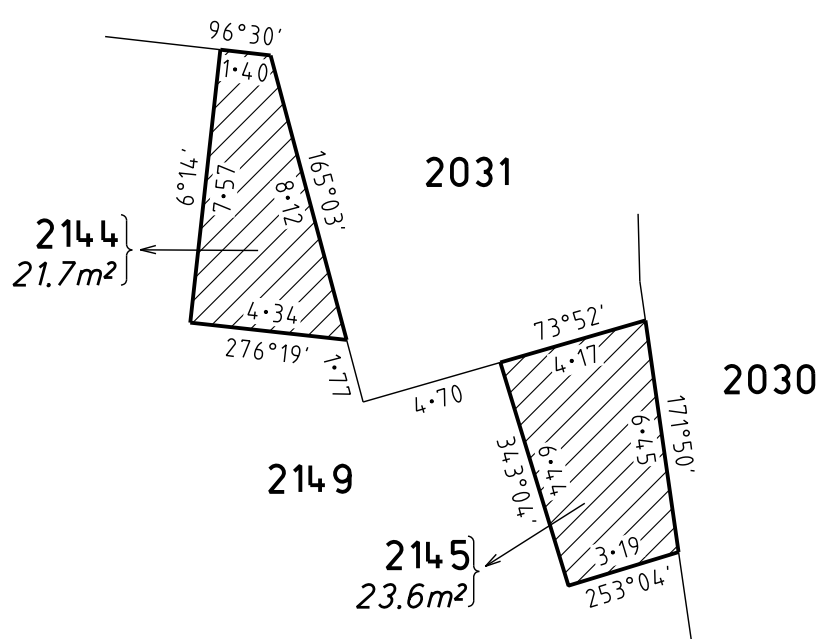


DIAGRAM 2
NOT TO SCALE

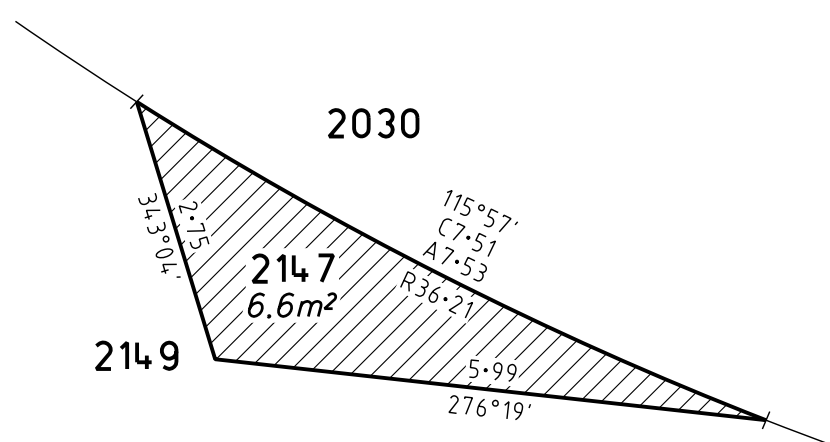


DIAGRAM 4
NOT TO SCALE

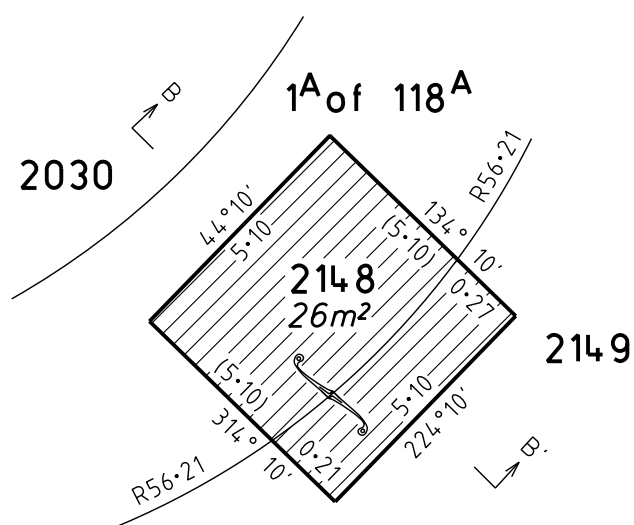
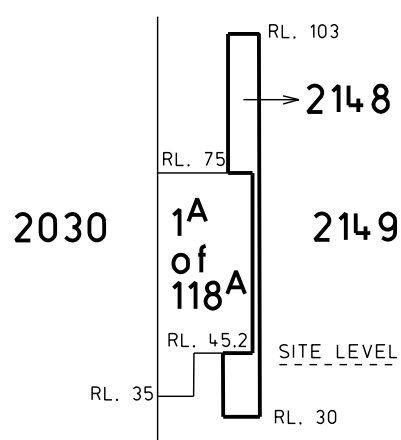


DIAGRAM 5
NOT TO SCALE



SECTION B-B'
NOT TO SCALE

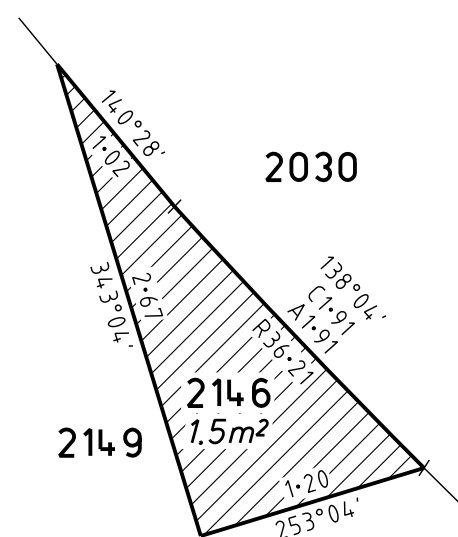


DIAGRAM 3
NOT TO SCALE