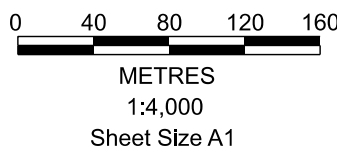


LIWIK BARRING
LANDSCAPE CONSERVATION AREA
WOORI YALLOCK CREEK NATURE CONSERVATION AREA
COUNTY OF EVELYN
N.P. 123H

Area 26 ha :



Lodged in the Central Plan Office pursuant to Section 42
Surveying Act 2004
Dated this 9th day of September 2025
Joanne Donelan
For Craig Leslie Sandy, Surveyor-General of Victoria