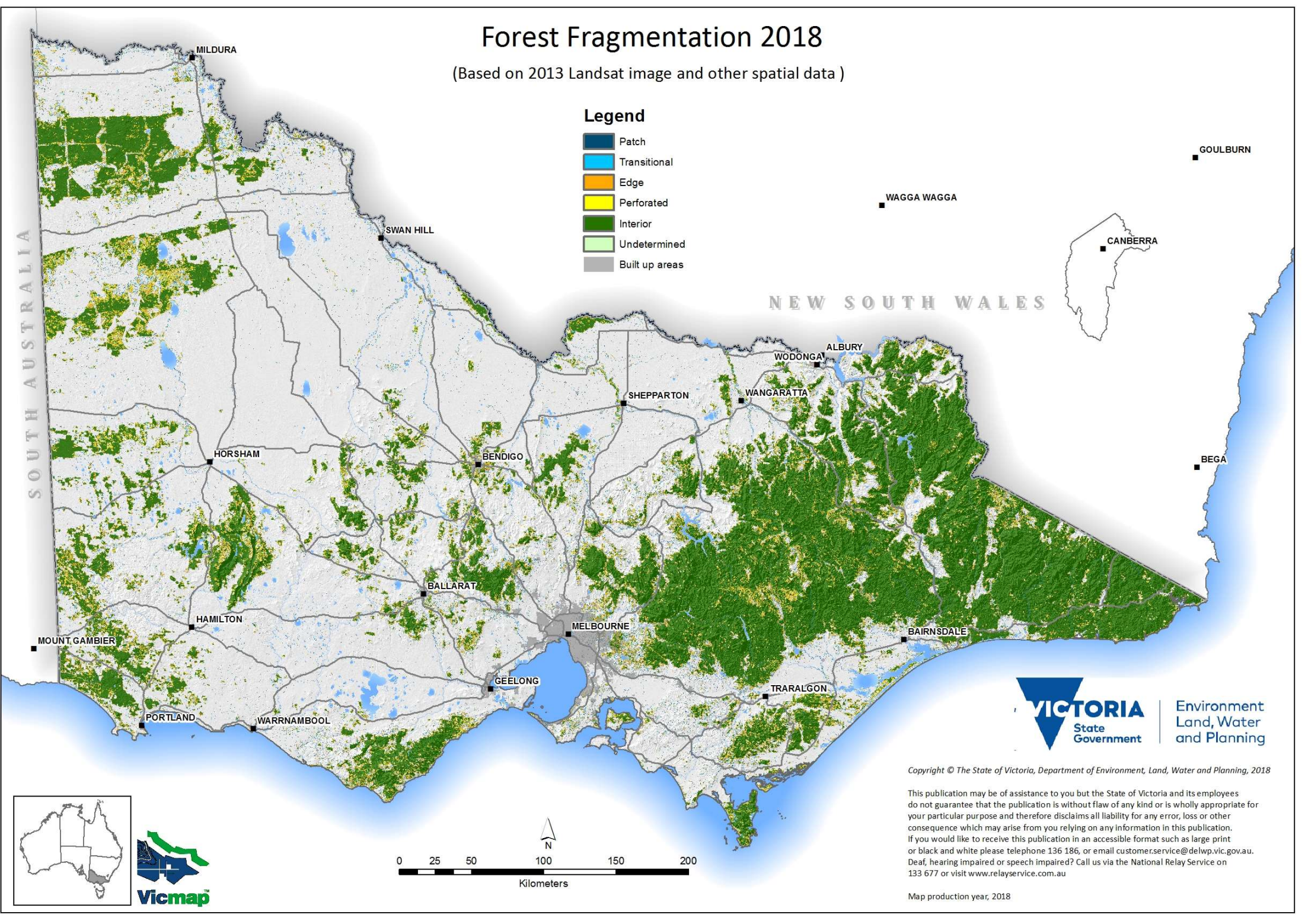


Forest Fragmentation 2018

(Based on 2013 Landsat image and other spatial data)

Legend

- Patch
- Transitional
- Edge
- Perforated
- Interior
- Undetermined
- Built up areas



Copyright © The State of Victoria, Department of Environment, Land, Water and Planning, 2018

This publication may be of assistance to you but the State of Victoria and its employees do not guarantee that the publication is without flaw of any kind or is wholly appropriate for your particular purpose and therefore disclaims all liability for any error, loss or other consequence which may arise from you relying on any information in this publication. If you would like to receive this publication in an accessible format such as large print or black and white please telephone 136 186, or email customer.service@delwp.vic.gov.au. Deaf, hearing impaired or speech impaired? Call us via the National Relay Service on 133 677 or visit www.relayservice.com.au

Map production year, 2018

