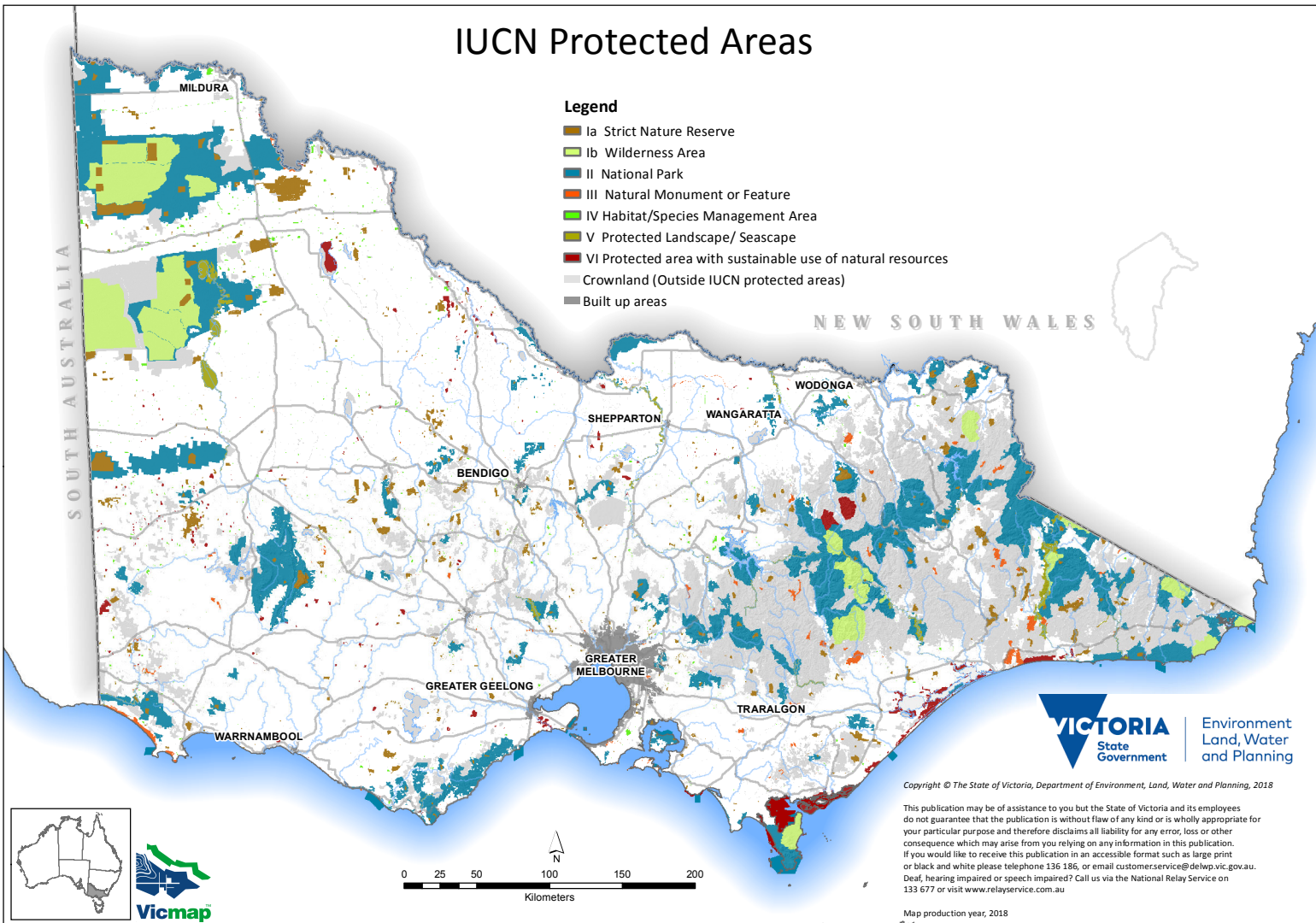


IUCN Protected Areas

Legend

- Ia Strict Nature Reserve
- Ib Wilderness Area
- II National Park
- III Natural Monument or Feature
- IV Habitat/Species Management Area
- V Protected Landscape/ Seascape
- VI Protected area with sustainable use of natural resources
- Crownland (Outside IUCN protected areas)
- Built up areas



Environment
Land, Water
and Planning

Copyright © The State of Victoria, Department of Environment, Land, Water and Planning, 2018

This publication may be of assistance to you but the State of Victoria and its employees do not guarantee that the publication is without flaw of any kind or is wholly appropriate for your particular purpose and therefore disclaims all liability for any error, loss or other consequence which may arise from you relying on any information in this publication. If you would like to receive this publication in an accessible format such as large print or black and white please telephone 136 186, or email customerservice@delwp.vic.gov.au. Deaf, hearing impaired or speech impaired? Call us via the National Relay Service on 133 677 or visit www.relayservice.com.au

Map production year, 2018