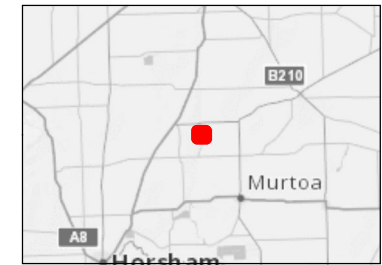
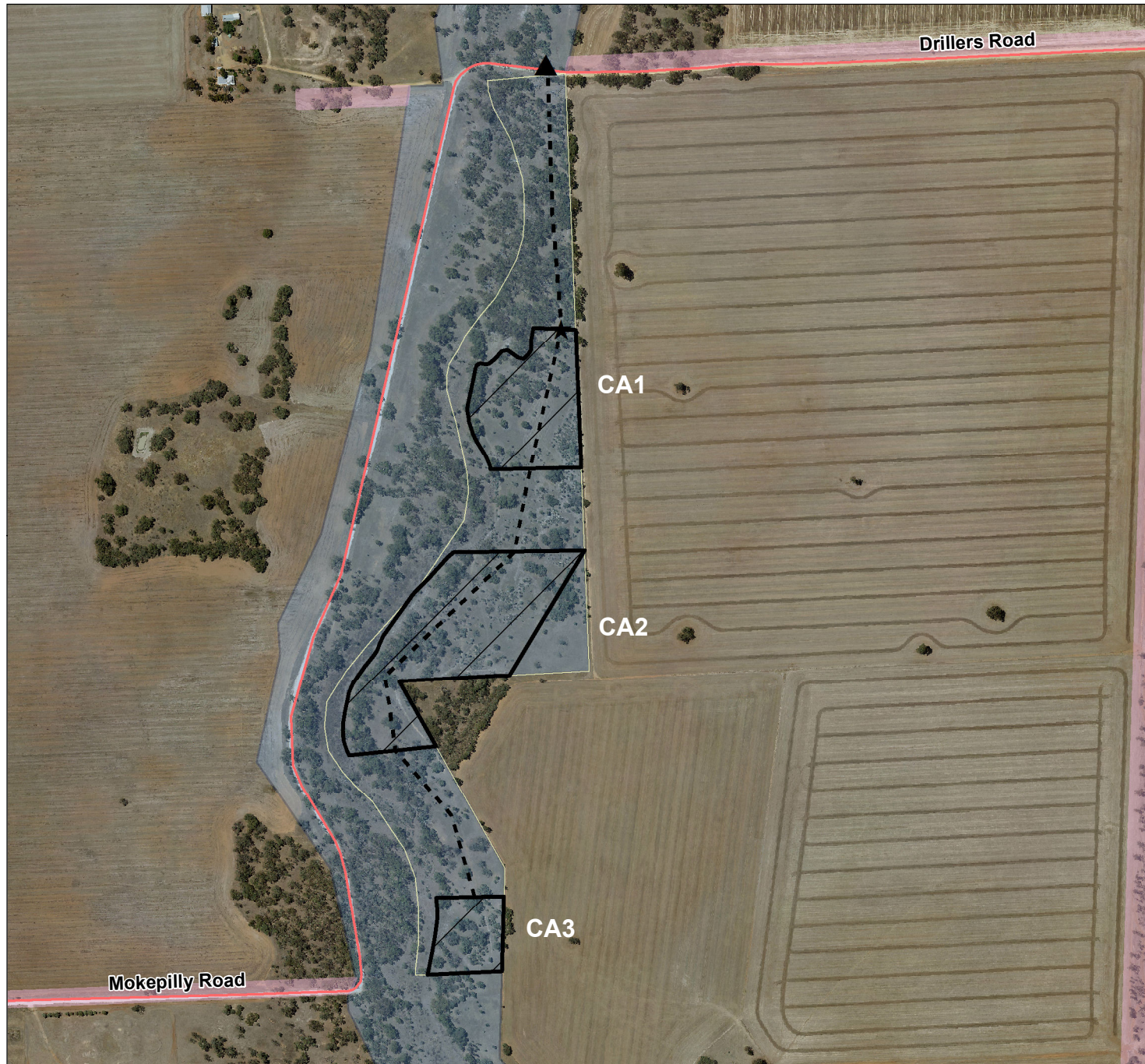
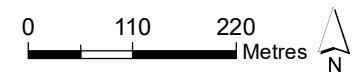


Yarriambiack Creek - Murtoa Camping Area 1, 2 & 3 (0200422)



Legend

- Designated area
- Parking area
- Pedestrian access point
- Pedestrian access route
- Licence area
- Local Road
- Unused road licence
- Government road reserve
- Crown land



Map produced by DELWP August 2022
 Datum: GDA94
 Projection: MGA Zone 54
 Spatial data is sourced from the Victorian Spatial Data Library.
 Copyright © The State of Victoria, Department of Environment, Land, Water and Planning, 2022

Disclaimer
 This publication may be of assistance to you but the State of Victoria and its employees do not guarantee that the publication is without flaw of any kind or is wholly appropriate for your particular purpose and therefore disclaims all liability for any error, loss or other consequence which may arise from you relying on any information in this publication.

Accessibility
 If you would like to receive this publication in an accessible format such as large print or black and white please telephone 136 186, or email customer.service@delwp.vic.gov.au.
 Deaf, hearing impaired or speech impaired?
 Call us via the National Relay Service on 133 677 or visit www.relayservice.com.au